

Knut



Safety
first!

Lockable handset box
(available for all beds)



Scan the QR code and get to know
our new side rail 'hide away'



side rail
'hide away'

NEW

Cuddle safely in Knvt – the bed with a high degree of safety.

Thanks to the four-winged folding sliding door, the barred sides and the flexible height and inclination adjustment possibilities, this bed provides very good therapeutic support.



Trendelenburg- /Antitrendelenburg-
function



Electric height
adjustment



Head- & footelement manual or
electric adjustment (option)



Curious how the child care bed Knvt (a)
(100 x 200 cm, 64 cm barred side
height) looks in your nursery?



Simply scan the QR code and
place the bed visually in your
nursery!



More info about
Knvt:
www.savi.de/en/care-beds-for-children/

EN 60601-2-52
DIN EN 50637

According to Medical Device Regulation
CE-Markering
Declaration of Conformity

Knut

Why a bed from SAVI?

- Great safety for your child
- Biologically neutral, pollutant-free (DIN EN 71-3)
- Stability and reliability
- Comfortable, back-friendly height electric
- Many bed sizes
- Individual equipment options
- Optimal eye contact with your child
- Large, safe indoor area
- Colourful padding for maximum protection
- Short delivery times



Knut's individual strengths

- Barred side height 64 - 89 cm
- Trendelenburg- /Antitrendelenburg-function
- Drawer / storage (option)
- Doors or lowerable side rails (option)
- Low entry height of 21 cm minimum (option)



All models are available with alternative side rail heights

Knut (a)

Barred side height 64 cm,
lying height 41 - 76 cm or
31 - 66 cm (small castors)



Knut (b)

Barred side height 78 cm,
lying height 41 - 91 cm or
31 - 81 cm (small castors)



Knut (c)

Barred side height 89 cm,
lying height 31 - 101 cm or
21 - 91 cm (small castors)



note:

Knut (c) with lowerable side rails changes the lying height to 41 - 111 cm!

Technical data

Lying area	External dimension	Article-no.
100 x 200 cm	113 x 218 cm	
90 x 200 cm (size L)	103 x 218 cm	
90 x 170 cm (size M)	103 x 188 cm	
70 x 140 cm (size XS)	83 x 158 cm (Knut (c) 103 x 158 cm)	
65 x 155 cm (size S)	78 x 173 cm (Knut (c) 98 x 173 cm)	
Doors		
Four-winged folding sliding door		•
Four-winged folding sliding door on both sides		99.750 +
Folding door in the 270° version		99.704 +
Folding door in the 270° version on both sides		99.704BEID +
Locking mechanism		
Child-proof SAVI-lock I		•
Child-proof SAVI-lock I metal		40100003 +
SAVI-lock II		99.033 +
SAVI-lock III		99.034 +
SAVI-lock IV		99.034A +
Lying height (top of slatted bed base)	Barred side height	
(a) 41- 76 cm electric	64 cm ^(a)	113.41.005 • Knut (a)
(b) 41- 91 cm electric	78 cm ^(a)	127.41.005 • Knut (b)
(c) 31-101 cm electric	89 cm ^(a)	127.31.705 • Knut (c)
Additional charge for 1 lowerable side rail*	Barred side height	
(+14 cm external length) manual	64 cm	99.710 +
electric		99.710EL +
manual	78 cm	99.712 +
electric		99.712EL +
manual	89 cm	99.714 +
electric		99.714EL +
Additional charge for 2 lowerable side rails*	Barred side height	
(+14 cm external length) manual	64 cm	99.711 +
electric		99.711EL +
manual	78 cm	99.713 +
electric		99.713EL +
manual	89 cm	99.715 +
electric		99.715EL +
side rail „hide away“ (only for Knut a+b)	Barred side height	
(+14 cm external length)	40 cm	99.710HIDEAWAY40 +
	64 cm	99.710HIDEAWAY64 +
2 side rails „hide away“ (only for Knut a+b)	Barred side height	
(+14 cm external length)	40 cm	99.710HIDEAWAY40B +
	64 cm	99.710HIDEAWAY64B +
Slatted bed base		
Manual adjustment		99.030 •
Electric adjustment		99.200 +
Trendelenburg-/Antitrendelenburg-function (tilting of the entire bed)		•

• = standard o.r. = on request + = accessories

(1) note:

In combination with lowerable side rails not possible.

(2) note:

All models are available with alternative side rail heights.

Technical data

Running gear		
Four castor running gear with total locking mechanism		•
Designer wooden castors	99.885	n.a.c.
Without or small castors ^(b) (21-91 cm)	99.882	n.a.c.
Central locking device with total brake**	99.887ZENTRAL	+
Kind of wood		
Beechwood „natural oiled“ (further colours see p. 79)		•
Mattresses		
Polyfoam mattress	99.031.4	•
Cold foam mattress	99.031.5	o.r.
Reha-star mattress plus (up to stage 2)	99.031.3.PLUS	+
Reha-star mattress II (up to stage 4)	99.031.3.ZWEI	+
Incontinence cover	99.031.3ZA50	+
Coloured features		
Natural	90.100	n.a.c.
Yellow	90.128	n.a.c.
Orange	90.204	•
Blue-purple	90.405	n.a.c.
Purple	90.406	n.a.c.
Blue	90.515	n.a.c.
Green (for more colours see page 78)	90.618	n.a.c.
Equipment		
Children's name on side of bed	Kindername	n.a.c.
Coloured sticks		n.a.c.
Perspex instead of sticks		o.r.
Perspex in the lower area of the head/foot end (standard on C)		o.r.
External lock on side of bed	99.706	+
Tube feed-through	99.840	o.r.
Raising aid	99.802	+
Sit up aid	99.820	+
2 drawers	99.040	+
Motor cover	99.803	+
Mattress holder	99.891	+
Protection for the bed base in case of kicks	99.892	+
Wood care set	99.880	+
Padding		
Motifpadding MALU, 50 cm height	99.050MALU	+
loose Skal-padding, 50 cm height	99.051	+
Fixed Skal-padding	99.051.FEST	o.r.
Fixed Skal-padding with integrated vinyl windows	99.051.FEST	o.r.
Edge padding	99.053	+

• = standard o.r. = on request + = accessories n.a.c. = no additional charge

* note:

If you choose KNUT (c) with lowerable side rails (article-no.: 99.710 - 99.715) the lying height will change to 41 - 111 cm.

** note:

The height dimensions change by approx. + 3 cm compared to the standard castor.

Knut

"hide away" - the side rail for more free space in your bedroom

(only possible with Knut a+b)

Thanks to the magically disappearing side rail, which disappears into a compartment under the slatted frame after sliding down, using it is a real pleasure.

- Easy to operate manually
- Can be lowered in stages
- Possible on one or both sides
- Side rail 'disappears' under the bed



Our new side rail has been registered with the Patent and Trade Mark Office.

Also available
with bars!

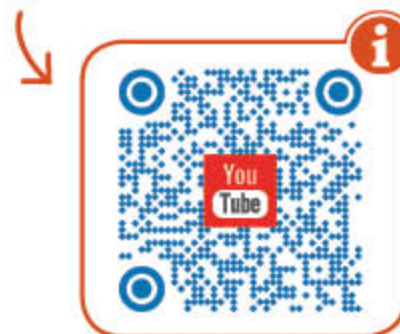
Also perfect in
combination with
drawer!



Safety first: Central locking device for 4-wheel castors

(only possible with Knut a+b)

Thanks to the new central locking device, it is now possible to lock all four castors at the same time. This means that it is not necessary to operate the locking device on each individual castor, thus preventing one castor from being overlooked. This helps to increase the stability of the bed.



Scan the QR code now and find out more!



Open side front thanks to four-winged folding sliding door

Thanks to the folding sliding mechanism, the door offers maximum stability and precise movement in any position. The entire side panel can be opened. Quality and function harmonise here. Customised additional doors are of course available on request.



e.g. in the wood colour 'Barrique'



ID: 32973
white lacquered



ID: 34771

Key data for Knut

- Side rail height 64 cm, side rail height 78 cm, side rail height 89 cm, in all model variants, other heights on request
- Lying height:
Knut (a)
41 to 76 cm
(with small castors 31 - 66 cm)

- Knut (b)
41 to 91 cm
(with small castors 31 - 81 cm)

- Knut (c)
31 to 101 cm
(with small castors 21 - 91 cm)
Note Knut (c): With lowerable side rails the lying height changes to 41 cm!

- Trendelenburg / Antitrendelenburg-function
- Four-winged folding sliding door
- Perspex (option)
- Lowerable side rails (option)
- Side rail „hide away“ (option)
- Central locking device for 4-wheel castors (option)
- Fixed Skai-padding (option)



ID: 34505
lying area 140 x 200 cm



ID: 36476
with central locking device



ID: 34469

Lowerable side rails



ID: 20355



ID: 34146



ID: 31399

Recessed safety grip

- Easy to use manually
- The safety gap on both recesses prevents unsupervised opening
- Minimal operating strength required (slider buttons)
- Grid adjustment



ID: 36128





Versions with lowerable side rail

Our lowerable side rail is available as follows:



Version 1

Lowerable side rail 'hide away', disappears under the bed as if by magic.



ID: 19926

Version 2

Lowerable side rail with one top element. You can remove the top element if you drop down the side rail.



ID: 18568

Special version 3

Lowerable side rail with hinged top element.

Attention: This version is only possible in combination with an electric side rail!

Advantages of the electrically lowerable side rail

- Easy to operate at the touch of a button
- Lockable handset prevents uncontrolled opening
- Can also be operated by people with disabilities
- Minimal operating strength required (push button)
- Infinitely adjustable



ID: 19046

Little tip:

In this catalogue you can discover many bed variants that we have already produced. You can recognize them by the „ID“ below the illustrations.



Fully folding 270° door

- Easy to operate manually
- Doors on head and foot element can completely be folded back
- 270° version also available with fixed Skai-padding



'These are beastly good beds!'



ID: 36603
wood colour 'Teak'



ID: 36738

✓ The plus when it comes to intensive care

Tube feed-through/supply opening

Our tube feed-through/supply opening is available in the following versions:



supply opening (hole)
with closing mechanism



tube feed-through
(gap version)



storage compartment
with tube feed-through
for hanging



ID: 32583
tube feed-through
(gap version)



ID: 38446
storage compartment
with tube feed-through
for hanging



ID: 34214
tube feed-through
(gap version)



ID: 36496
supply opening (hole)
with closing mechanism



Knvt

Optimum protection thanks to fixed Skai-padding

Your child is very active? With the firmly integrated Skai-padding (75 mm thickness), you offer your child optimum protection.

For more information on the different padding options, see page 79/ 80!

Our Skai-padding is in many colours available!

You can find a pre-selection on our website at:

www.savi.de/en/bed-padding/



ID: 32960



ID: 34677



ID: 35645



ID: 33205



ID: 34230



Optimal view thanks to integrated vinyl windows

The integrated vinyl windows fit flush with the fixed Skai-padding and thus offer a similar padding effect to the permanently integrated foam padding. The windows offer an optimal view. So you keep an eye on your child easily and your child feels visibly more comfortable.



ID: 20272

Tube feed-through

On request, our fixed Skai-padding is also available with an integrated tube feed-through.



Edge padding

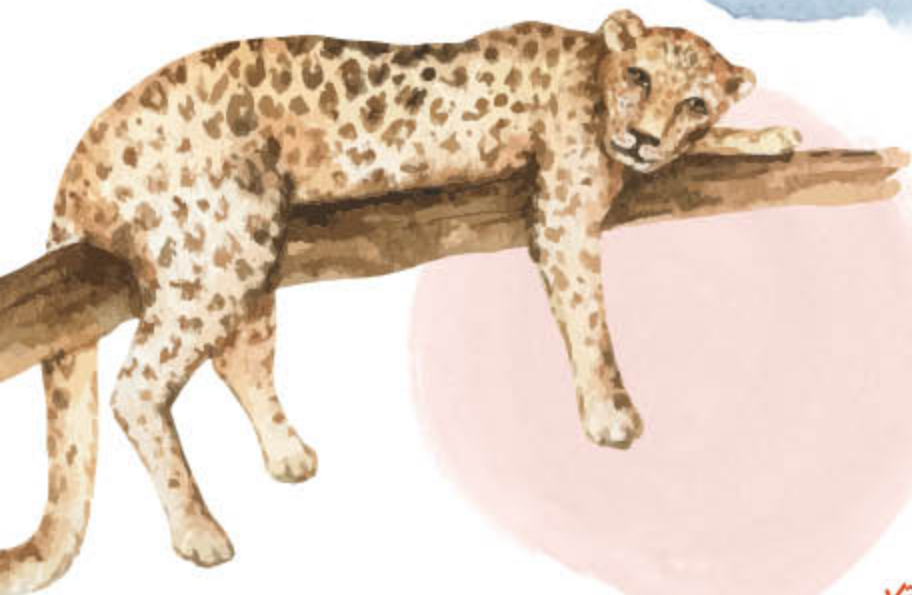


ID: 34177



Scan the QR code to find out more about our fixed Skai-padding with integrated vinyl windows and its padding capability.

Knut (b) 40



Knut (b) 40's individual strengths

- 64 cm barred side height
- Trendelenburg- /Antitrendelenburg-function
- Drawer / storage (option)
- Lowerable side rails on both sides (option)

Barred side heights

- Barred side height 40 cm + push-on element 24 cm (total height 64 cm to comply with legal requirements)
- Lying height 41 - 91 cm

variable and safe



lowerable side rails on both sides (option)



low side rails due to removable push-on element on both sides (option)



lowerable side rail on one side with 24 cm push-on element (standard)

Technical data

Lying area	External dimension	Article-no.
90 x 200 cm (size L)	106,5 x 232 cm	127.41.005.L
90 x 170 cm (size M)	106,5 x 202 cm	127.41.005.M
Lying height (top of slatted bed base)	Barred side height	
41 - 91 cm electric	64 cm resp. 40 cm	
Lowerable side rail	Barred side height	
(+14 cm external length) manual	64 cm	99.710 •
electric	64 cm	99.710EL +
2 lowerable side rails	Barred side height	
(+14 cm external length) manual	64 cm	99.711 +
electric	64 cm	99.711EL +
Slatted bed base		
Manual adjustment		99.030 •
Electric adjustment		99.200 +
Trendelenburg-/Antitrendelenburg-function (tilting of the entire bed)		•

• = standard o.r. = on request + = accessories



Technical data

Kind of wood		
Beechwood „natural oiled“ (further colours see p. 79)		•
Mattresses		
Polyfoam mattress	99.031.4	•
Cold foam mattress	99.031.5	+
Reha-star mattress plus (up to stage 2)	99.031.3.PLUS	+
Reha-star mattress II (up to stage 4)	99.031.3.ZWEI	+
Incontinence cover	99.031.3ZA50	+
Coloured features		
Natural	90.100	n.a.c.
Yellow	90.128	n.a.c.
Orange	90.204	•
Blue-purple	90.405	n.a.c.
Purple	90.406	n.a.c.
Blue	90.515	n.a.c.
Green (for more colours see page 78)	90.618	n.a.c.
Equipment		
Children's name on side of bed	Kindername	n.a.c.
Coloured sticks		n.a.c.
Perspex Instead of sticks		o.r.
Perspex in the lower area of the head/foot end (standard on C)		o.r.
Tube feed-through	99.840	o.r.
Raising aid	99.802	+
Sit up aid	99.820	+
2 drawers	99.040	+
Motor cover	99.803	+
Mattress holder	99.891	+
Protection for the bed base in case of kicks	99.892	+
Wood care set	99.880	+
Padding		
Motifpadding MALU, 50 cm height	99.050MALU	+
loose Skal-padding, 50 cm height	99.051	+
Fixed Skal-padding	99.051.FEST	o.r.
Fixed Skal-padding with integrated vinyl windows	99.051.FEST	o.r.
Edge padding	99.053	+

• = standard o.r. = on request + = accessories n.a.c. = no additional charge

Create your own



Create your children's bed for rehabilitation!

This is a list which you can use to create your children's bed for rehabilitations. We will take your wishes into consideration and make an offer about one of our bed's.

Just make a cross and decide how your bed should look like:

1. Lying area of the bed?

- ☐ 65 x 155 cm ☐ 70 x 140 cm ☐ 90 x 170 cm
☐ 90 x 200 cm ☐ 100 x 200 cm other size: _____

2. Which barred side do you need? Height (cm): _____

3. Do you use a patient-lifter? ☐ Yes ☐ No

4. Which lying height (top of slatted base) do you need?

- ☐ 40 cm ☐ 50 cm ☐ 60 cm ☐ 70 cm other height: _____

5. Do you need an electric height adjustment? ☐ Yes ☐ No

6. Which slatted bed base do you need?

- ☐ no adjustment ☐ manual adjustment ☐ step-protection for the bed base
☐ electric adjustment ☐ Trendelenburg-function

7. What kind of doors do you want?

- ☐ 4-winged folding sliding door ☐ 270° door ☐ side rail "hide away" ☐ folding door
☐ lowerable side rail ☐ electric lowerable side rail

8. How many doors do you need?

- ☐ front side ☐ front and back sides ☐ head and footelement

9. Locking mechanism?

- ☐ SAVI-lock I ☐ SAVI-lock II ☐ SAVI-lock III ☐ SAVI-lock IV

10. Do you need perspex?

- ☐ Yes. Where?: _____ ☐ No

11. Kind of wood / wood-colour? Wood:

- ☐ beech ☐ pine
 Wood-colour: ☐ natural ☐ basalt ☐ wenge ☐ barrique ☐ teak ☐ walnut
☐ white stained ☐ white lacquered

12. Colour feature?

- ☐ natural ☐ yellow ☐ orange ☐ red ☐ grey ☐ blue-purple ☐ purple
☐ blue ☐ green ☐ white ☐ pink ☐ other colour: _____
☐ coloured sticks ☐ children's name: _____

13. Running gear? ☐ castors ☐ without castors

14. Do you want drawer? ☐ Yes ☐ No

15. Do you want a mattress? ☐ Yes ☐ No

If yes, which one?

- ☐ polyfoam mattress ☐ interior spring mattress ☐ cold foam mattress
☐ Reha-Star II ☐ Reha-Star Plus ☐ incontinence cover

16. Do you need a padding? ☐ Yes ☐ No

If yes, which one?

- ☐ loose Skai-padding ☐ fixed Skai-padding ☐ edge-padding ☐ motifpadding MALU
 height of the padding: _____ colour of the padding: _____

17. Do you need vinyl windows?

- ☐ Yes. Where? _____ ☐ No

18. Equipment?

- ☐ removable posts (Niklas) ☐ net-roof ☐ raising aid ☐ lockable handset box
☐ tube feed-through (gap) ☐ infusion holder ☐ drawers ☐ mattress holder
☐ touch-protection for height adjustment ☐ foot cut-out (e.g. for patient lift)
☐ central locking device for 4-roller chassis (Knut a+b only) ☐ access aid made of artificial leather
☐ supply opening (hole) with closing mechanism

☐ Please use this statements to create an offer, where you choose a model, which fulfils the handicaps to the greatest possible extent.

☐ Please use this statements to create an offer about a special model to fulfil the handicaps exactly.

place, date

stamp, sign

Very easy:

Just send us your order via email

or use our online-form at: www.savi.de/en/home/

SAVI GmbH Reha Solutions

Lise-Meitner-Str. 10 Fon: +49 (0) 25 64 - 93 09-70

D-48691 Vreden Fax: +49 (0) 25 64 - 93 09-60