



✓
30 years
of
experience

✓
Made in
Germany

✓
Our beds
comply
with the
standards!

✓
We take care of
the environment,
e.g. by utilising
geothermal
energy

✓
Wood from
sustainable
forestry

On bed-safari

Care beds for children | Therapy couches | Travel bed | Babywalker | Therapy chair | Babybox | Custom seating

Welcome

Love of life for people with disabilities

I'm Günter Bußmann, and I founded this company in 1995 with the aim of manufacturing products that would provide other people with a love of life and make their everyday life easier.

The choice had to be wood as a natural product! The pleasant feel when you touch wood fascinates children in particular.

We are continuously introducing innovations into our products in collaboration with establishments such as children's homes, and in particular by talking with parents who are caring for their children.

If you have a challenge you need to solve, would like some advice on the right therapy bed for a child or want to order a bed, please do not hesitate to give us a ring:

+49 (0) 25 64 / 93 09 - 70

Günter Bußmann

Our aim is to reconcile quality, ergonomics and your personal wishes with nature, so that both you and your child are satisfied.

Wood from afforestation areas and forests that are managed in an ecologically sound way. PEFC certified!



Environmentally conscious manufactory

As a manufacturer of therapy beds for children, care beds, heavy duty beds, Chorea Huntington beds and therapy couches, we follow a philosophy of thinking holistically, and we also attach great value to the subject of the environment and energy when we are putting this into practice.

Materials

All the materials incorporated into our products, and especially the woods we use for producing them, come from afforestation areas and forests in Europe that are managed in an ecologically sound way. We obtain them from PEFC certified suppliers.

Production site

Our production buildings are energy optimised and the production area is also fitted throughout with under floor heating (heat pumps)

Our bright rooms are flooded with light and require hardly any additional lighting during the day, which means that we can save a lot of energy here and protect the environment!



Machinery and equipment

The refuse generated during the production process (dust and wood shavings) is compressed into briquettes and made available for burning so as to protect the environment.

The exhaust air is filtered, and by means of a heat recovery system more than 80% of the residual heat can be returned to the building. Modern, energy optimised machinery ensures that our energy consumption is as low as possible.



Energy procurement (electricity)

A photovoltaic system of almost 200 KW is used to supply our electricity. Using this we are able to supply the energy needed for the heat pump and the majority of the energy for the production facilities.



Quality and processing

There are many factors that make a product valuable:

Raw materials

Production begins with the critical selection of raw materials. Only the purest woods are processed in our manufactory in an environmentally friendly manner.

Surface

In order to maintain the natural character of the wood, the surfaces are exclusively finished with natural wax which has been tested in terms of its health and ecological aspects and in accordance with DIN EN 71 (safety of toys).

Ergonomics

When developing the beds we took care to ensure that the edges are well rounded during processing. The fittings are also on the inside to prevent injury.

Standards

All our beds comply with the European standards, bear the CE mark and are compatible with one another. We thus offer the optimal conditions for you to find the ideal solution depending on your individual requirements.

Safety

All the beds in the SAVI range offer the childproof patented lock which prevents the doors being opened inadvertently (DBGM protected).



We are specialized in care beds, comfort beds and special beds for seniors, heavyweights and chorea Huntington's patients.



Suitable for
hospital use



Bio-
compatible



Special requirements
(e.g. sloping roofs) are
possible by request!
We will be pleased to
advise you.

**Special requirements
are possible by request.
We look forward to your call
+49 (0) 25 64/93 09 - 70!**



Welcome

Advice

We use our experience and creativity to find customised solutions for our customers. We offer solutions for every budget size and realise the desired requirements.

We would be pleased to send you a written, no obligation quotation or advise you by phone.

Tip: On page 81 you will find a customization form.

Tel: +49 (0) 25 64 / 93 09 - 70

Fax: +49 (0) 25 64 / 93 09 - 60

Custom-made beds

We also produce individual custom-made beds. Our technical team will be happy to talk through the possible options with you.

Showroom

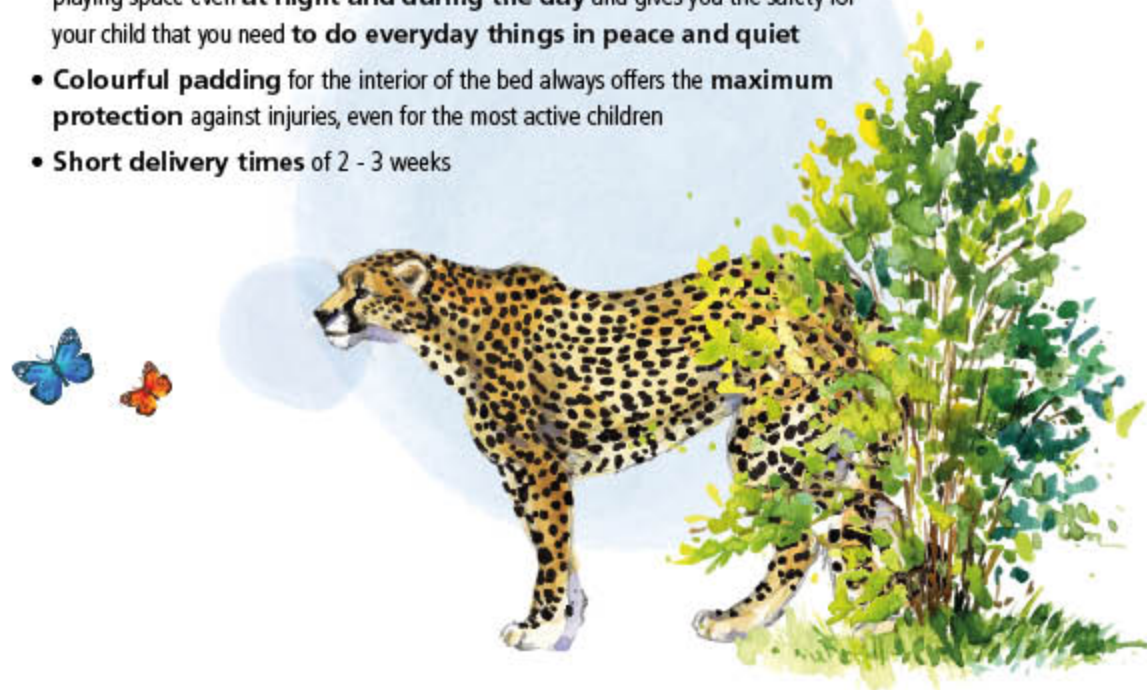
Why not visit our production site in Germany? If you register in advance by phone we will schedule sufficient time to provide the optimal advice for you and/or your children.

We also offer product training courses at our premises for specialist retailers!

*Our clearly structured manufacturing
enables us to realise many customers'
wishes quickly and at a reasonable price.*

Why a bed from SAVI?

- **Great safety**, thanks to sophisticated and safe locking systems that prevent your child from unintentionally opening from the inside
- **Biologically neutral, pollutant-free wood treatment** according to DIN 71-3 (safety of toys)
- The best for your child - professional construction, high stability and **reliability**
- **Comfortable, back-friendly height** due to electric height adjustment (stepless)
- **Many bed sizes** available (up to 180 x 220 cm)
- **Individual equipment options**, e.g. rigid, manual or infinitely variable electric slat bed base
- **Optimal eye contact with your child** through the safety windows made of special perspex
- A **large, safe indoor area** of the bed (100 x 200 cm) offers your child enough playing space even **at night and during the day** and gives you the safety for your child that you need **to do everyday things in peace and quiet**
- **Colourful padding** for the interior of the bed always offers the **maximum protection** against injuries, even for the most active children
- **Short delivery times** of 2 - 3 weeks



Content

Children's care beds & therapeutic needs from the rehab manufactory



Knut



Tom



Niklas



Savoir-Vivre



Little Mila



Jonas



Lola



Felix



Travel bed | Babywalker



Therapy chair „Wellenreiter“



Babybox



Custom Seating

SAVI Reha Solutions	p. 02
Knut	p. 06
Tom	p. 20
Niklas	p. 30
Savoir-Vivre	p. 38
Little Mila	p. 46
Jonas	p. 52
Lola	p. 58
Felix	p. 64
Travel bed	p. 68
Babywalker	p. 69
Therapy chair	p. 70
Babybox	p. 71
Custom Seating	p. 72
Accessories	p. 74
Slatted bed base	p. 76
Mattresses	p. 77
Range of colours	p. 78
Padding	p. 80
Customization form	p. 81

Knut



Safety
first!

Lockable handset box
(available for all beds)



Scan the QR code and get to know
our new side rail 'hide away'



side rail
'hide away'

NEW

Cuddle safely in Knvt – the bed with a high degree of safety.

Thanks to the four-winged folding sliding door, the barred sides and the flexible height and inclination adjustment possibilities, this bed provides very good therapeutic support.



Trendelenburg- /Antitrendelenburg-
function



Electric height
adjustment



Head- & footelement manual or
electric adjustment (option)



Curious how the child care bed Knvt (a)
(100 x 200 cm, 64 cm barred side
height) looks in your nursery?



Simply scan the QR code and
place the bed visually in your
nursery!



More info about
Knvt:
www.savi.de/en/care-beds-for-children/

EN 60601-2-52
DIN EN 50637

According to Medical Device Regulation
CE-Markering
Declaration of Conformity

Knut

Why a bed from SAVI?

- Great safety for your child
- Biologically neutral, pollutant-free (DIN EN 71-3)
- Stability and reliability
- Comfortable, back-friendly height electric
- Many bed sizes
- Individual equipment options
- Optimal eye contact with your child
- Large, safe indoor area
- Colourful padding for maximum protection
- Short delivery times



Knut's individual strengths

- Barred side height 64 - 89 cm
- Trendelenburg- /Antitrendelenburg-function
- Drawer / storage (option)
- Doors or lowerable side rails (option)
- Low entry height of 21 cm minimum (option)



All models are available with alternative side rail heights

Knut (a)

Barred side height 64 cm,
lying height 41 - 76 cm or
31 - 66 cm (small castors)



Knut (b)

Barred side height 78 cm,
lying height 41 - 91 cm or
31 - 81 cm (small castors)



Knut (c)

Barred side height 89 cm,
lying height 31 - 101 cm or
21 - 91 cm (small castors)



note:

Knut (c) with lowerable side rails changes the lying height to 41 - 111 cm!

Technical data

Lying area	External dimension	Article-no.
100 x 200 cm	113 x 218 cm	
90 x 200 cm (size L)	103 x 218 cm	
90 x 170 cm (size M)	103 x 188 cm	
70 x 140 cm (size XS)	83 x 158 cm (Knut (c) 103 x 158 cm)	
65 x 155 cm (size S)	78 x 173 cm (Knut (c) 98 x 173 cm)	
Doors		
Four-winged folding sliding door		•
Four-winged folding sliding door on both sides		99.750 +
Folding door in the 270° version		99.704 +
Folding door in the 270° version on both sides		99.704BEID +
Locking mechanism		
Child-proof SAVI-lock I		•
Child-proof SAVI-lock I metal		40100003 +
SAVI-lock II		99.033 +
SAVI-lock III		99.034 +
SAVI-lock IV		99.034A +
Lying height (top of slatted bed base)	Barred side height	
(a) 41- 76 cm electric	64 cm ^(a)	113.41.005 • Knut (a)
(b) 41- 91 cm electric	78 cm ^(a)	127.41.005 • Knut (b)
(c) 31-101 cm electric	89 cm ^(a)	127.31.705 • Knut (c)
Additional charge for 1 lowerable side rail*	Barred side height	
(+14 cm external length) manual	64 cm	99.710 +
electric		99.710EL +
manual	78 cm	99.712 +
electric		99.712EL +
manual	89 cm	99.714 +
electric		99.714EL +
Additional charge for 2 lowerable side rails*	Barred side height	
(+14 cm external length) manual	64 cm	99.711 +
electric		99.711EL +
manual	78 cm	99.713 +
electric		99.713EL +
manual	89 cm	99.715 +
electric		99.715EL +
side rail „hide away“ (only for Knut a+b)	Barred side height	
(+14 cm external length)	40 cm	99.710HIDEAWAY40 +
	64 cm	99.710HIDEAWAY64 +
2 side rails „hide away“ (only for Knut a+b)	Barred side height	
(+14 cm external length)	40 cm	99.710HIDEAWAY40B +
	64 cm	99.710HIDEAWAY64B +
Slatted bed base		
Manual adjustment		99.030 •
Electric adjustment		99.200 +
Trendelenburg-/Antitrendelenburg-function (tilting of the entire bed)		•

• = standard o.r. = on request + = accessories

(1) note:

In combination with lowerable side rails not possible.

(2) note:

All models are available with alternative side rail heights.

Technical data

Running gear		
Four castor running gear with total locking mechanism		•
Designer wooden castors	99.885	n.a.c.
Without or small castors ^(b) (21-91 cm)	99.882	n.a.c.
Central locking device with total brake**	99.887ZENTRAL	+
Kind of wood		
Beechwood „natural oiled“ (further colours see p. 79)		•
Mattresses		
Polyfoam mattress	99.031.4	•
Cold foam mattress	99.031.5	o.r.
Reha-star mattress plus (up to stage 2)	99.031.3.PLUS	+
Reha-star mattress II (up to stage 4)	99.031.3.ZWEI	+
Incontinence cover	99.031.3ZA50	+
Coloured features		
Natural	90.100	n.a.c.
Yellow	90.128	n.a.c.
Orange	90.204	•
Blue-purple	90.405	n.a.c.
Purple	90.406	n.a.c.
Blue	90.515	n.a.c.
Green (for more colours see page 78)	90.618	n.a.c.
Equipment		
Children's name on side of bed	Kindername	n.a.c.
Coloured sticks		n.a.c.
Perspex instead of sticks		o.r.
Perspex in the lower area of the head/foot end (standard on C)		o.r.
External lock on side of bed	99.706	+
Tube feed-through	99.840	o.r.
Raising aid	99.802	+
Sit up aid	99.820	+
2 drawers	99.040	+
Motor cover	99.803	+
Mattress holder	99.891	+
Protection for the bed base in case of kicks	99.892	+
Wood care set	99.880	+
Padding		
Motifpadding MALU, 50 cm height	99.050MALU	+
loose Skal-padding, 50 cm height	99.051	+
Fixed Skal-padding	99.051.FEST	o.r.
Fixed Skal-padding with integrated vinyl windows	99.051.FEST	o.r.
Edge padding	99.053	+

• = standard o.r. = on request + = accessories n.a.c. = no additional charge

* note:

If you choose KNUT (c) with lowerable side rails (article-no.: 99.710 - 99.715) the lying height will change to 41 - 111 cm.

** note:

The height dimensions change by approx. + 3 cm compared to the standard castor.

Knut

"hide away" - the side rail for more free space in your bedroom

(only possible with Knut a+b)

Thanks to the magically disappearing side rail, which disappears into a compartment under the slatted frame after sliding down, using it is a real pleasure.

- Easy to operate manually
- Can be lowered in stages
- Possible on one or both sides
- Side rail 'disappears' under the bed



Our new side rail has been registered with the Patent and Trade Mark Office.

Also available
with bars!

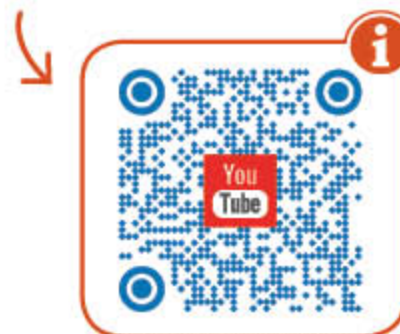
Also perfect in
combination with
drawer!



Safety first: Central locking device for 4-wheel castors

(only possible with Knut a+b)

Thanks to the new central locking device, it is now possible to lock all four castors at the same time. This means that it is not necessary to operate the locking device on each individual castor, thus preventing one castor from being overlooked. This helps to increase the stability of the bed.



Scan the QR code now and find out more!



Open side front thanks to four-winged folding sliding door

Thanks to the folding sliding mechanism, the door offers maximum stability and precise movement in any position. The entire side panel can be opened. Quality and function harmonise here. Customised additional doors are of course available on request.



e.g. in the wood colour 'Barrique'



ID: 32973
white lacquered



ID: 34771

Key data for Knut

- Side rail height 64 cm, side rail height 78 cm, side rail height 89 cm, in all model variants, other heights on request

- Lying height:

Knut (a)

41 to 76 cm
(with small castors 31 - 66 cm)

Knut (b)

41 to 91 cm
(with small castors 31 - 81 cm)

Knut (c)

31 to 101 cm
(with small castors 21 - 91 cm)

Note Knut (c): With lowerable side rails the lying height changes to 41 cm!

- Trendelenburg / Antitrendelenburg-function
- Four-winged folding sliding door
- Perspex (option)
- Lowerable side rails (option)
- Side rail „hide away“ (option)
- Central locking device for 4-wheel castors (option)
- Fixed Skai-padding (option)



ID: 34505
lying area 140 x 200 cm



ID: 36476
with central locking device



ID: 34469

Lowerable side rails



ID: 20355



ID: 34146



ID: 31399

Recessed safety grip

- Easy to use manually
- The safety gap on both recesses prevents unsupervised opening
- Minimal operating strength required (slider buttons)
- Grid adjustment



ID: 36128





Versions with lowerable side rail

Our lowerable side rail is available as follows:



Version 1

Lowerable side rail 'hide away', disappears under the bed as if by magic.



ID: 19926

Version 2

Lowerable side rail with one top element. You can remove the top element if you drop down the side rail.



ID: 18568

Special version 3

Lowerable side rail with hinged top element.

Attention: This version is only possible in combination with an electric side rail!

Advantages of the electrically lowerable side rail

- Easy to operate at the touch of a button
- Lockable handset prevents uncontrolled opening
- Can also be operated by people with disabilities
- Minimal operating strength required (push button)
- Infinitely adjustable



ID: 19046

Little tip:

In this catalogue you can discover many bed variants that we have already produced. You can recognize them by the „ID“ below the illustrations.



Fully folding 270° door

- Easy to operate manually
- Doors on head and foot element can completely be folded back
- 270° version also available with fixed Skai-padding



'These are beastly good beds!'



ID: 36603
wood colour 'Teak'



ID: 36738

✓ The plus when it comes to intensive care

Tube feed-through/supply opening

Our tube feed-through/supply opening is available in the following versions:



supply opening (hole)
with closing mechanism



tube feed-through
(gap version)



storage compartment
with tube feed-through
for hanging



ID: 32583
tube feed-through
(gap version)



ID: 38446
storage compartment
with tube feed-through
for hanging



ID: 34214
tube feed-through
(gap version)



ID: 36496
supply opening (hole)
with closing mechanism



Knvt

Optimum protection thanks to fixed Skai-padding

Your child is very active? With the firmly integrated Skai-padding (75 mm thickness), you offer your child optimum protection.

For more information on the different padding options, see page 79/ 80!

Our Skai-padding is in many colours available!

You can find a pre-selection on our website at:

www.savi.de/en/bed-padding/



ID: 32960



ID: 34677



ID: 35645



ID: 33205



ID: 34230



Optimal view thanks to integrated vinyl windows

The integrated vinyl windows fit flush with the fixed Skai-padding and thus offer a similar padding effect to the permanently integrated foam padding. The windows offer an optimal view. So you keep an eye on your child easily and your child feels visibly more comfortable.



ID: 20272

Tube feed-through

On request, our fixed Skai-padding is also available with an integrated tube feed-through.



Edge padding

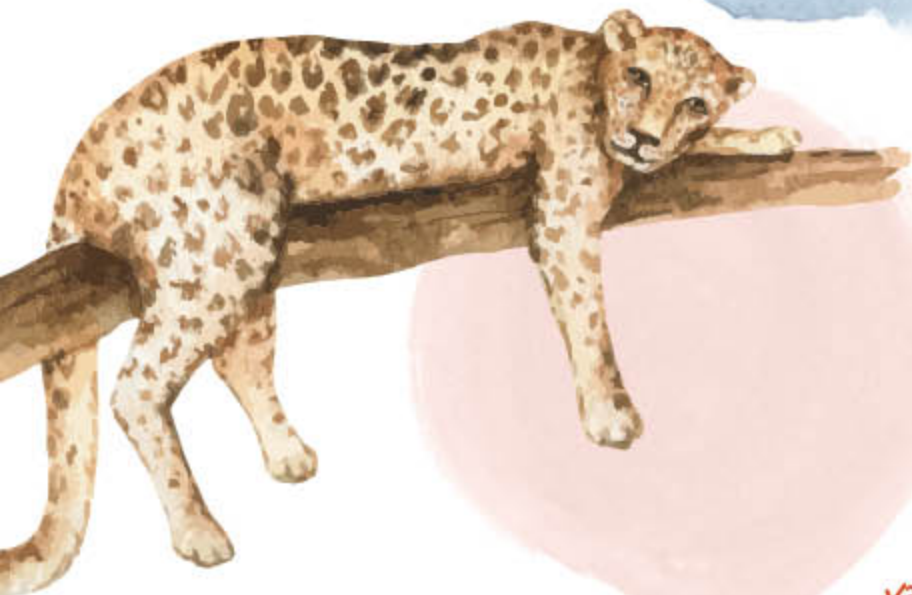


ID: 34177



Scan the QR code to find out more about our fixed Skai-padding with integrated vinyl windows and its padding capability.

Knvt (b) 40



Knvt (b) 40's individual strengths

- 64 cm barred side height
- Trendelenburg- /Antitrendelenburg-function
- Drawer / storage (option)
- Lowerable side rails on both sides (option)

Barred side heights

- Barred side height 40 cm + push-on element 24 cm (total height 64 cm to comply with legal requirements)
- Lying height 41 - 91 cm

variable and safe



lowerable side rails on both sides (option)



low side rails due to removable push-on element on both sides (option)



lowerable side rail on one side with 24 cm push-on element (standard)

Technical data

Lying area	External dimension	Article-no.
90 x 200 cm (size L)	106,5 x 232 cm	127.41.005.L
90 x 170 cm (size M)	106,5 x 202 cm	127.41.005.M
Lying height (top of slatted bed base)	Barred side height	
41 - 91 cm electric	64 cm resp. 40 cm	
Lowerable side rail	Barred side height	
(+14 cm external length) manual	64 cm	99.710 •
electric	64 cm	99.710EL +
2 lowerable side rails	Barred side height	
(+14 cm external length) manual	64 cm	99.711 +
electric	64 cm	99.711EL +
Slatted bed base		
Manual adjustment		99.030 •
Electric adjustment		99.200 +
Trendelenburg-/Antitrendelenburg-function (tilting of the entire bed)		•

• = standard o.r. = on request + = accessories



Technical data

Kind of wood		
Beechwood „natural oiled“ (further colours see p. 79)		•
Mattresses		
Polyfoam mattress	99.031.4	•
Cold foam mattress	99.031.5	+
Reha-star mattress plus (up to stage 2)	99.031.3.PLUS	+
Reha-star mattress II (up to stage 4)	99.031.3.ZWEI	+
Incontinence cover	99.031.3ZA50	+
Coloured features		
Natural	90.100	n.a.c.
Yellow	90.128	n.a.c.
Orange	90.204	•
Blue-purple	90.405	n.a.c.
Purple	90.406	n.a.c.
Blue	90.515	n.a.c.
Green (for more colours see page 78)	90.618	n.a.c.
Equipment		
Children's name on side of bed	Kindername	n.a.c.
Coloured sticks		n.a.c.
Perspex Instead of sticks		o.r.
Perspex in the lower area of the head/foot end (standard on C)		o.r.
Tube feed-through	99.840	o.r.
Raising aid	99.802	+
Sit up aid	99.820	+
2 drawers	99.040	+
Motor cover	99.803	+
Mattress holder	99.891	+
Protection for the bed base in case of kicks	99.892	+
Wood care set	99.880	+
Padding		
Motifpadding MALU, 50 cm height	99.050MALU	+
loose Skal-padding, 50 cm height	99.051	+
Fixed Skal-padding	99.051.FEST	o.r.
Fixed Skal-padding with integrated vinyl windows	99.051.FEST	o.r.
Edge padding	99.053	+

• = standard o.r. = on request + = accessories n.a.c. = no additional charge

Tom

Curious how the child care bed Tom
(90 x 170 cm, 113 cm barred side
height) looks in your nursery?



Simply scan the QR code and
place the bed visually in your
nursery!



Great colour?

Available for every one of
our beds and
other wood colours!
See page 79.

← e.g. in wood colour 'Wenge'

Special beds for unique children – our Tom can be designed variably according to the needs of your child and therefore always offers the right solution.

Thanks to the four-winged folding sliding door, the barred sides and the flexible height adjustment possibilities, our Tom provides an optimal therapeutic support. Due to the low entry height of a little about 20 cm even smaller children can get into the bed on their own.

low entry height of
about 20 cm possible



Electric height
adjustment



Head- & footelement manual or
electric adjustment (option)

Discover our improved
corner posts in the ball
chain test!



Scan the QR code and find out more
about our Improved corner posts (for
all our beds)!



More Info about
Tom:
www.savi.de/en/care-beds-for-children/

EN 60601-2-52
DIN EN 50637

According to Medical Device Regulation
CE-Markering
Declaration of Conformity

Tom

Best security for your child,
thanks to optimal locking systems

Why a bed from SAVI?

- Great safety for your child
- Biologically neutral, pollutant-free (DIN EN 71-3)
- Stability and reliability
- Comfortable, back-friendly height electric
- Many bed sizes
- Individual equipment options
- Optimal eye contact with your child
- Large, safe indoor area
- Colourful padding for maximum protection
- Short delivery times

Tom's individual strengths

- Four-winged folding sliding door with comfort handle
- Castors
- High barred sides (option)
- Low entry height of about 20 cm (option)
- Trendelenburg- / Antitrendelenburg-function (option)
- Fixed Skai-padding (also with integrated vinyl windows) (option)



Choice of colours (see on page 78)

A lot of safety, even for
particularly active
children



Barred side height 72 cm,
e.g. In blue-purple colour accent with wooden castors



Barred side height 113 cm,
e.g. In blue-purple colour accent with wooden castors



Barred side height 135 cm,
e.g. In blue-purple colour accent with wooden castors

Technical data

Lying area	External dimension	Article-no.
100 x 200 cm	115,5 x 223 cm	155.34.008
90 x 200 cm	105,5 x 223 cm	155.34.008.L
90 x 170 cm	105,5 x 193 cm	155.34.008.M
65 x 155 cm	80,5 x 178 cm	155.34.008.S
70 x 140 cm	85,5 x 163 cm	155.34.008.XS
Doors		
Four-winged folding sliding door		•
Four-winged folding sliding door on both sides	99.750	+
Folding door in the 270° version	99.704	+
Folding door in the 270° version on both sides	99.704BEID	+
Locking mechanism		
Child-proof SAVI-lock I		•
Child-proof SAVI-lock I metal	40100003	+
SAVI-lock II	99.033	+
SAVI-lock III	99.034	+
SAVI-lock IV	99.034A	+
Lying height (top of slatted bed base)		
34 - 104 cm electric height adjustment		•
Barred side height	Overall height	
72 cm	114 cm	+
113 cm	155 cm	•
135 cm	177 cm	+
Special sizes on request		+
Slatted bed base		
No adjustment (fixed)		+
Manual adjustment	99.030	•
Electric adjustment	99.200	+
Trendelenburg-/Antitrendelenburg-function (tilting of the entire bed)	99.211	+
Running gear		
Four castor running gear with total locking mechanism		•
Designer wooden castors	99.885	n.a.c.
Without castors and low entrance height of 20 cm	99.883	+
Small castors and low entrance height of 27 cm	99.881	+
Kind of wood		
Beechwood „natural oiled“ (further colours see p. 79)		•
Mattresses		
Polyfoam mattress	99.031.4	•
Cold foam mattress	99.031.5	+
Reha-star mattress plus (up to stage 2)	99.031.3.PLUS	+
Reha-star mattress II (up to stage 4)	99.031.3.ZWEI	+
Incontinence cover	99.031.3ZA50	+

• = standard o.r. = on request + = accessories n.a.c. = no additional charge

Technical data

Coloured features		
Natural	90.100	n.a.c.
Yellow	90.128	n.a.c.
Orange	90.204	n.a.c.
Blue-purple	90.405	•
Purple	90.406	n.a.c.
Blue	90.515	n.a.c.
Green (for more colours see page 78)	90.618	n.a.c.
Equipment		
Children's name on side of bed	Kindemame	n.a.c.
Coloured sticks		n.a.c.
Perspex instead of sticks		•
Sticks instead of perspex	99.815	n.a.c.
Touch protection for height adjustment	99.900	+
External lock on side of bed	99.706	+
Tube feed-through	99.840	o.r.
Raising aid	99.802	+
Net-roof	99.800	+
Adaption of the bed for sloping ceiling		o.r.
Mattress holder	99.891	+
Protection for the bed base in case of kicks	99.892	+
Wood care set	99.880	+
Padding		
loose Skai-padding, 50 cm height	99.051	+
loose Skai-padding, 100 cm height	99.051.100	+
Fixed Skai-padding	99.051.FEST	o.r.
Fixed Skai-padding with integrated vinyl windows	99.051.FEST	o.r.
Edge padding	99.053	+

• = standard o.r. = on request + = accessories n.a.c. = no additional charge

Our Skai-padding is in many colours available!

You can find a pre-selection on our website at:

www.savi.de/en/bed-padding/



Tom

Open side front thanks to four-winged folding sliding door

Thanks to its folding sliding mechanism, the door offers the maximum stability and precise operation in every position. The design is a harmonious combination of quality and function. The entire front side can be opened in this way.

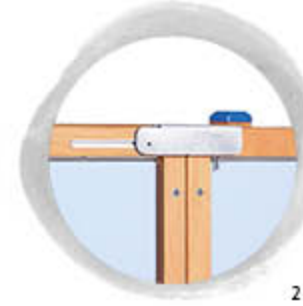
Tom adapts perfectly to the situation and makes everyday life with your child easier. Naturally by request we can also offer customised additional doors, and custom-made sloping roofs are also not a problem for us.

Safety first – SAVI door locks

- 1 Child-proof SAVI-lock I (base)
- 2 Child-proof SAVI-lock I made of metal
- 3 SAVI-lock II
- 4 SAVI-lock III: The labyrinth guide prevents the child opening the bed by accident. This lock is keyless and has no magnets. Can also be retrofitted.
- 5 SAVI-lock IV: Here too the bed is opened by means of a labyrinth guide, but in addition this lock also operates against resistance. This lock is keyless, without magnets and can be retrofitted.
- 6 External lock on side of bed (increases the stability and provides more secure)



1



2



3



4



5



6

Great solutions for
door locks – highest
safety first

Key data of Tom

- Barred side height 72 cm,
Barred side height 113 cm,
Barred side height 135 cm,
special sizes on request
- Lying height 34 - 104 cm or
Lying height 20 - 90 cm (without castors)
- Trendelenburg-/Antitrendelenburg-function (option)
- Choose between perspex or sticks

270° door to fold back completely

- Easy to use manually
- Doors on the head and foot elements fold back completely
- 270° version can also be supplied with fixed Skai-padding



ID: 35656



ID: 20009



Lockable handset box
(available for all beds)

Safety
first!



Tom

All functions of the bed can always be used
without removing the padding beforehand!

Optimum protection thanks to fixed Skai-padding

Your child is very active? With the fixed Skai-padding (75 mm thickness), you offer your child optimum protection.

For more information on the different padding options, see page 79/ 80!

Optimal view thanks to integrated vinyl windows

The integrated vinyl windows fit flush with the fixed Skai-padding and thus offers a similar padding effect to the permanently integrated foam padding.

The windows offer an optimal view. So you keep an eye on your child easily and your child feels visibly more comfortable.



ID: 36009
Supply opening (hole)
with closing mechanism



ID: 36449
Supply opening (hole)
with closing mechanism



Scan the QR code to find out more about
our fixed Skai-padding with integrated vinyl
windows and its padding capability.



ID: 37975
External door lock

Examples



ID: 38202
Colour accent grey,
lockable Handset-box,
external lock



ID: 36422
Child's name on the side
of the bed



ID: 35057
Low entrance height
(without castors)



ID: 31270
White lacquered
(opaque)



ID: 34948
Without castors,
coloured sticks



ID: 37188
Step protection for
the slatted frame



ID: 34204
Sticks, wooden castors and
270° door on both sides



ID: 34923
Touch protection
for height adjustment

"Sooo much space –
I'd love to cuddle
in it too!"



Tom Paddy

Tom Paddy's individual strengths

- Low entry height of 20 cm minimum
- High barred sides 113 cm
- Fixed Skai-padding with integrated vinyl windows
- Castors (option)
- Trendelenburg-/Antitrendelenburg-function (option)



← low entry height of about 20 cm possible



Technical data

Lying area	External dimension	Article-no.
90 x 200 cm	120 x 238 cm	155.34.008.L PADDY
90 x 170 cm	120 x 208 cm	155.34.008.M PADDY
Doors		
Four-winged folding sliding door		•
Four-winged folding sliding door on both sides	99.750	+
Folding door in the 270° version	99.704	+
Folding door in the 270° version on both sides	99.704BEID	+
Locking mechanism		
Child-proof SAVI-lock I		•
Child-proof SAVI-lock I metal	40100003	+
SAVI-lock II	99.033	+
SAVI-lock III	99.034	+
SAVI-lock IV	99.034A	+
Lying height (top of slatted bed base)		
20 - 90 cm electric height adjustment (without castors)		•
Door height	Overall height	
113 cm	149 cm	+
Slatted bed base		
Manual adjustment		•
Electric adjustment	99.200	+
Trendelenburg-/Antitrendelenburg-function (tilting of the entire bed)	99.211	+
Running gear		
Without castors and low entrance height of 20 cm	99.883	+
Small castors and low entrance height of 27 cm	99.881	+
Kind of wood		
Beechwood „natural oiled“ (further colours see p. 79)		•
Mattresses		
Polyfoam mattress	99.031.4	•
Cold foam mattress	99.031.5	+
Reha-star mattress plus (up to stage 2)	99.031.3.PLUS	+
Reha-star mattress II (up to stage 4)	99.031.3.ZWEI	+
Incontinence cover	99.031.3ZA50	+

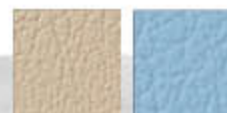
• = standard o.r. = on request + = accessories

Technical data

Equipment		
External lock on side of bed	99.706	+
Raising aid	99.802	+
Net-roof	99.800	+
Mattress holder	99.891	+
Protection for the bed base in case of kicks	99.892	+
Wood care set	99.880	+
Padding		
Fixed Skai-padding with integrated vinyl windows	99.051.FEST	•

• = standard o.r. = on request + = accessories

Fixed padding in creme or light-blue.



Niklas

Curious how the child care bed Niklas
(90 x 200 cm, 40 + 20 cm barred
sides) looks in your nursery? →



Simply scan the QR code and
place the bed visually in your
nursery!



Be safe and free – Niklas offers your child unlimited freedom thanks to individual design options.

Our Niklas offers extreme flexibility and functionality in the barred sides. This bed can be reached from all sides because the grilles can be lowered independently of each other.

Maximum safety combined with limitless freedom – a good combination for well-being.



Electric height adjustment



Head- & footelement manual or electric adjustment (option)

Safety first!



Lockable handset box
(available for all beds)



EN 60601-2-52
DIN EN 50637

According to Medical Device Regulation
CE-Markering
Declaration of Conformity

Niklas

Why a bed from SAVI?

- Great safety for your child
- Biologically neutral, pollutant-free (DIN EN 71-3)
- Stability and reliability
- Comfortable, back-friendly height electric
- Many bed sizes
- Individual equipment options
- Optimal eye contact with your child
- Large, safe indoor area
- Colourful padding for maximum protection
- Short delivery times



Niklas' individual strengths

- All barred sides can be lowered
- 60 cm barred side height
- Removable corner posts (option)
- Low entrance (approx. 47 cm) (option)
- Trendelenburg- / Antitrendelenburg-function (option)



Choice of colours (see on page 78)



perspex + sticks ①,
e.g. with lowerable sides
in purple colour accent



all sticks,
e.g. with electrically lowerable sides
in purple colour accent



all perspex,
e.g. with electrically lowerable sides
in purple colour accent



MALU

Our motifpadding is available with pattern "MALU".

You will find more information on our website:
www.savi.de/en/bed-padding/

Technical data

Lying area	External dimension	Article no.
100 x 200 cm	115 x 215 cm	131.50.006
90 x 200 cm	105 x 215 cm	131.50.006.L
90 x 170 cm	105 x 185 cm	131.50.006.M
65 x 155 cm	80 x 170 cm	131.50.006.S
Doors		
All sides lowerable in steps		•
Lying height (top of slatted bed base)		
76 - 116 cm electric height adjustment		•
47 - 87 cm electric height adjustment *		o.r.
Barred side height	Overall height	
60 cm	140 cm	•
40 cm + 20 cm *	155 cm	99.737 +
Slatted bed base		
Manual adjustment	99.030	•
Electric adjustment	99.201	+
Trendelenburg-/Antitrendelenburg function (tilting of the entire bed)	99.212	+
Running gear		
Four castor running gear with total locking mechanism		•
Designer wooden castors	99.885	n.a.c.
Kind of wood		
Beechwood „natural oiled“ (further colours see p. 79)		•
Mattresses		
Polyfoam mattress	99.031.4	•
Cold foam mattress	99.031.5	+
Reha-star mattress plus (up to stage 2)	99.031.3.PLUS	+
Reha-star mattress II (up to stage 4)	99.031.3.ZWEI	+
Incontinence cover	99.031.3ZA50	+

• = standard o.r. = on request + = accessories n.a.c. = no additional charge

* note

The electric height adjustment 47 - 87 cm is only possible in combination with a barred side height of 40 cm + 20 cm push-on element.

Technical data

Coloured features		
Natural	90.100	n.a.c.
Yellow	90.128	n.a.c.
Orange	90.204	n.a.c.
Blue-purple	90.405	n.a.c.
Purple	90.406	•
Blue	90.515	n.a.c.
Green (for more colours see page 78)	90.618	n.a.c.
Equipment		
Children's name on side of bed	Kindername	n.a.c.
Coloured sticks		n.a.c.
Perspex + sticks (as shown) ①	99.810LEXANNIK	+
4 removable corner posts	99.889	+
Only 1 side lowerable, 3 sides fixed	99.730	+
Only 2 sides lowerable, 2 sides fixed	99.731	+
1 electric lowerable side rail	99.735	+
2 electric lowerable side rails	99.736	+
Tube feed-through	99.840	o.r.
Raising aid	99.802	+
Sit up aid	99.820	+
Adaption of the bed for sloping ceiling		o.r.
2 drawers	99.040	+
Mattress holder	99.891	+
Protection for the bed base in case of kicks	99.892	+
Wood care set	99.880	+
Padding		
Motifpadding MALU, 50 cm height	99.050MALU	+
loose Skal-padding, 50 cm height	99.051NIKLAS	+
Fixed Skal-padding	99.051.FEST	o.r.
Fixed Skal-padding with integrated vinyl windows	99.051.FEST	o.r.

• = standard o.r. = on request + = accessories n.a.c. = no additional charge



Key data of Niklas

- Barred side height 60 cm, all side-rails lowerable
- Trendelenburg- /Antitrendelenburg-function (option)
- Lying height 76 - 116 cm or 47 bis 87 cm (low entrance)
- Electrically lowerable sides (option)
- Removable corner posts (option)
- Perspex (option)
- Choice of colours



perspex + sticks,
e.g. low entrance (47 - 87 cm) and
two side rail elements (40 cm + 20 cm
push-on element)



Benefits of electric lowerable sides

- Easy to use at the push of a button
- Lockable handset prevents unsupervised opening
- Can also be operated by people with disabilities
- Minimal operating strength required (push button)
- Infinitely adjustable



Recessed safety grip

- Easy to use manually
- The safety gap on both recesses prevents unsupervised opening
- Minimal operating strength required (slider buttons)
- Grid adjustment



recessed safety grip (basic)



Removable
corner posts

Optimum protection thanks to fixed Skai-padding

Your child is very active? With the firmly integrated Skai-padding (75 mm thickness), you offer your child optimum protection.

For more information on the different padding options, see page 79/80!



*Only the best
for your child!*



ID: 20841
Stained white,
supply opening (hole)



ID: 30840
Fold-down side rail



ID: 30432



ID: 26525
With Trendelenburg-function,
supply opening (hole)



ID: 32560
With edge padding



ID: 20631

Trendelenburg-function

Tilting of the entire bed



ID: 35165
Wood colour „Barrigue“,
electric lowerable side rail



ID: 10394
Adaption of the bed
for sloping ceiling



ID: 10682
Canopy bed, total height 215 cm,
entrance height 30 cm

Little tip:

In this catalogue you can discover many bed variants that we have already produced. You can recognize them by the „ID“ below the illustrations.

„I love a good place to sleep and lounge.“



Examples



ID: 30482
Ventilator shelf



ID: 38324
Wood colour „walnut“



ID: 31153
White lacquered,
two drawers,
partly Lexan,
partly sticks



ID: 30299
Without castor



ID: 20214
Supply opening (hole)
with closing mechanism



ID: 31123
Small double swivel
castors, blue sticks



ID: 35092
White lacquered



Savoir-Vivre

Curious how the child care bed
Savoir-Vivre 100 x 200 cm
(100 cm barred side height)
looks in your nursery?



Simply scan the QR code and
place the bed visually in your
nursery!



Strong as an animal through everyday life – our ergonomic beds offer your child the ideal conditions for a healthy sleep.

This model combines safety with comfort. The electric lying-height adjustment is especially useful when it comes to the daily care of handicapped people.



Electric height adjustment



Head- & footelement manual or electric adjustment (option)

Safety first!



Lockable handset box
(available for all beds)



More Info about
Savoir-vivre:
www.savl.de/en/care-beds-for-children/

EN 60601-2-52
DIN EN 50637

According to Medical Device Regulation
CE-Markering
Declaration of Conformity

Savoir-Vivre

Why a bed from SAVI?

- Great safety for your child
- Biologically neutral, pollutant-free (DIN EN 71-3)
- Stability and reliability
- Comfortable, back-friendly care height electric
- Many bed sizes
- Individual equipment options
- Optimal eye contact with your child
- Large, safe indoor area
- Colourful padding for maximum protection
- Short delivery times



Barred side height 125 cm,
e.g. in orange colour accent



Barred side height 60 cm,
e.g. in green colour accent



Barred side height 150 cm,
e.g. in purple colour accent



Barred side height 100 cm,
e.g. in blue colour accent



Barred side height 170 cm,
e.g. in blue-purple colour accent

Savoir-Vivre's individual strengths

- Barred side height 60 - 220 cm (option)
- Trendelenburg- /Antitrendelenburg-function (option)
- Drawer / storage (option)

All SAVI-locks
available for even
greater security

Technical data

Lying area	External dimension	Article-no.
100 x 200 cm	113 x 206 cm	
90 x 200 cm (size L)	103 x 206 cm	
90 x 170 cm (size M)	103 x 176 cm	
65 x 155 cm (size S)	78 x 161 cm	
Doors		
Four-winged folding sliding door		•
Four-winged folding sliding door on both sides	99.750	+
Folding door in the 270° version	99.704	+
Folding door in the 270° version on both sides	99.704BEID	+
Locking mechanism		
Child-proof SAVI-lock I		•
Child-proof SAVI-lock I metal	40100003	+
SAVI-lock II	99.033	+
SAVI-lock III	99.034	+
SAVI-lock IV	99.034A	+
Lying height (top of slatted bed base)		
40 - 80 cm electric height adjustment (without castors)		•
Barred side height	Overall height	
60/70 cm	110 cm	110.50.504.99101
100/110 cm	150 cm	150.50.504.99101
	for size 90 x 170 cm	
125/135 cm	175 cm	175.50.504.99101
	for size 90 x 170 cm	
150/160 cm	200 cm	200.50.504.99101
170/180 cm	220 cm	220.50.504.99101
Special sizes on request		
Slatted bed base		
Manual adjustment	99.030	•
Electric adjustment	99.200	+
Trendelenburg-/ Antitrendelenburg-function (tilting of the entire bed)	99.213	+
Running gear		
Four castor running gear with total locking mechanism (height: 17 cm)	99.887	+
Designer wooden castors (height: 17 cm)	99.886	+
Cut out on the front side (height: 8 cm)	99.830	n.a.c.
Kind of wood		
Pinewood		n.a.c.
Beechwood „natural oiled“ (further colours see p. 79)		•
Mattresses		
Polyfoam mattress	99.031.4	•
Cold foam mattress	99.031.5	+
Reha-star mattress plus (up to stage 2)	99.031.3.PLUS	+
Reha-star mattress II (up to stage 4)	99.031.3.ZWEI	+
Incontinence cover	99.031.3ZA50	+

• = standard o.r. = on request + = accessories n.a.c. = no additional charge

Technical data

Coloured features		
Natural	90.100	n.a.c.
Yellow	90.128	n.a.c.
Orange	90.204	n.a.c.
Blue-purple	90.405	n.a.c.
Purple	90.406	n.a.c.
Blue	90.515	n.a.c.
Green (for more colours see page 78)	90.618	•
Equipment		
Children's name on side of bed	Kindername	n.a.c.
Coloured sticks		n.a.c.
Perspex instead of sticks		o.r.
Tube feed-through	99.840	o.r.
External lock on side of bed	99.706	+
Raising aid	99.802	+
Sit up aid	99.820	+
Net-roof	99.800	+
Adaption of the bed for sloping ceiling		o.r.
Mattress holder	99.891	+
Protection for the bed base in case of kicks	99.892	+
Wood care set	99.880	+
Padding		
Motifpadding MALU, 50 cm height	99.050MALU	+
loose Skai-padding, 50 cm height	99.051	+
loose Skai-padding, 100 cm height	99.051.100	+
Fixed Skai-padding	99.051.FEST	o.r.
Fixed Skai-padding with integrated vinyl windows	99.051.FEST	o.r.
Edge padding	99.053	+

• = standard o.r. = on request + = accessories n.a.c. = no additional charge

Our Skai-padding is in many colours available!

You can find a pre-selection on our website at:

www.savi.de/en/bed-padding/



Savoir-Vivre

Key data of Savoir-Vivre

- Barred side height 60 - 170 cm, other heights on request
- Electric lying height 40 - 80 cm
- Four-winged folding sliding door
- Child-proof SAVI-lock
- Four-casters running gear (option)
- Perspex (option)

Heights

Barred side	Door	Total
• 60 cm	• 70 cm	• 110 cm
• 100 cm	• 110 cm	• 150 cm
• 125 cm	• 135 cm	• 175 cm
• 150 cm	• 160 cm	• 200 cm
• 170 cm	• 180 cm	• 220 cm



Total heights: 110 cm | 150 cm | 175 cm | 200 cm | 220 cm



Locking of doors



External lock on side of bed (option)

heavy, massive, good

Cut out



Height: 8 cm
(other heights are possible, e.g. for use of patient lifts)

great for the back



Examples



ID: 32835
Folding sliding door on both sides



ID: 34822
Coloured sticks



ID: 33458
White lacquered



ID: 34982
Completely perspex and drawers



ID: 34467
Foot cut-out (15 cm)
in the front frame

Savoir-Vivre

Optimum protection thanks to fixed Skai-padding

Your child is very active? With the firmly integrated Skai-padding (75 mm thickness), you offer your child optimum protection.

For more information on the different padding options, see page 79/80!



ID: 36814



ID: 32390
Stained white



ID: 36658



ID: 37345
Net-roof



ID: 33646

Our Skai-padding is in many colours available!
You can find a pre-selection on our website at:
www.savi.de/en/bed-padding/



Optimal view thanks to integrated vinyl windows

The integrated vinyl windows fit flush with the fixed Skai-padding and thus offer a similar padding effect to the permanently integrated foam padding. The windows offer an optimal view. So you keep an eye on your child easily and your child feels visibly more comfortable.



ID: 34909



ID: 31485
Pine wood



ID: 23297



ID: 32813
Net-roof

Little Mila



Cuddly and without hurdles – with extra flat entrance of 7 cm

Due to the very low construction „Little Mila“ offers a lying height of 7 cm (up to 80 cm) including electric head and foot adjustment.



Trendelenburg- /Antitrendelenburg-
function



Barred side 70 cm



Electric height
adjustment



Head- & footelement manual or
electric adjustment (option)



More Info about
Little Mila:
www.savl.de/en/care-beds-for-children/

EN 60601-2-52
DIN EN 50637

According to Medical Device Regulation
CE-Markering
Declaration of Conformity

Little Mila

Why a bed from SAVI?

- Great safety for your child
- Biologically neutral, pollutant-free (DIN EN 71-3)
- Stability and reliability
- Comfortable, back-friendly care height electric
- Many bed sizes
- Individual equipment options
- Optimal eye contact with your child
- Large, safe indoor area
- Colourful padding for maximum protection
- Short delivery times

Little Mila's individual strengths

- Barred side height 70 - 120 cm
- 8 doors
- Trendelenburg- / Antitrendelenburg-function
- Lying height of 7 cm minimum (top of slatted bed base)
- Electric head / foot adjustment
- Fixed integrated padding (option), retrofittable (just possible with Little Mila)

Lockable Handset-box (for all beds available)



Safety
first!

All model variants are available with the following barred side heights

Barred side height 70 cm,
Lying height 7 - 80 cm



Barred side height 90 cm,
Lying height 7 - 80 cm



Barred side height 120 cm,
Lying height 7 - 80 cm



Technical data

Lying area	External dimension	Article-no.
90 x 200 cm (size L)	103 x 232 cm	
Barred side height	Overall dimensions	
70 cm	83 cm	
90 cm	102 cm	
120 cm	132 cm	
Doors		
Folding doors on both sides (8 doors)		•
Locking mechanism		
SAVI-lock IV	99.034A	•
Lying height (top of slatted bed base)		
7 - 80 cm electrical		•
Slatted bed base		
Electric adjustment	99.200	•
Trendelenburg-/Antitrendelenburg-function (tilting of the entire bed))	99.213	•

• = standard o.r. = on request + = accessories

Our great fixed integrated padding
can be easily retrofitted for.

No conversion required – simply screw in – done!
(only for Little Mila)



Technical data

Running gear		
Four castor running gear made of plastic 75 mm		•
Kind of wood		
Beechwood „natural oiled“ (further colours see p. 79)		•
Mattresses		
Polyfoam mattress	99.031.4	•
Cold foam mattress	99.031.5	o.r.
Reha-star mattress plus (up to stage 2)	99.031.3.PLUS	+
Reha-star mattress II (up to stage 4)	99.031.3.ZWEI	+
Incontinence cover	99.031.3ZA50	+
Coloured features		
Natural	90.100	n.a.c.
Equipment		
Perspex		•
External lock on side of bed	99.706	+
Tube feed-through	99.840	o.r.
Raising aid	99.802	+
Sit up aid	99.820	+
Wood surface care set	99.880	+
Padding		
Motifpadding MALLU, 50 cm height	99.050MALLU	+
loose Skal-padding 50 cm height	99.051	+
Fixed Skal-padding 50 mm with integrated vinyl windows	99.051.FEST	+
Edge padding	99.053	+

• = standard o.r. = on request + = accessories n.a.c. = no additional charge



Little Mila

Optimum protection thanks to fixed Skai-padding

Your child is very active? With the fixed Skai-padding (50 mm thickness), you offer your child optimum protection.

For more information on the different padding options, see page 79/ 80!

Easy to retrofit



This Skai-padding is available in grey!



(other colours on request)



120 cm barred side height



Optimal view thanks to integrated vinyl windows

The integrated vinyl windows fit flush with the fixed Skai-padding and thus offer a similar padding effect to the permanently integrated foam padding. The windows offer an optimal view. So you keep an eye on your child easily and your child feels visibly more comfortable.



90 cm barred side height



"A bathing day in the river
is a lot of fun,
but I always get
suuuper tired."



Scan the QR code to find out more about
our fixed padding with integrated vinyl
windows.

Jonas



On a dream journey with Jonas – our handmade beds offer your child an unmistakable sleeping comfort and particularly beautiful dreams.

This bed offers a high degree of safety. Guaranteed by the high barred sides and our proven SAVI-lock.



EN 60601-2-52
DIN EN 50637

According to Medical Device Regulation
CE-Markering
Declaration of Conformity

Why a bed from SAVI?

- Great safety for your child
- Biologically neutral, pollutant-free (DIN EN 71-3)
- Stability and reliability
- Comfortable, back-friendly care height electric
- Many bed sizes
- Individual equipment options
- Optimal eye contact with your child
- Large, safe indoor area
- Colourful padding for maximum protection
- Short delivery times



ID: 11071
Barred side height 110 cm,
e.g. with drawers,
in blue colour accent

Jonas' individual strengths

- Cost-effective, as no height adjustment is required
- Barred side 60 - 220 cm (option)
- Drawer/storage (option)



Choice of colours (see on page 78)



Barred side height 100 cm,
e.g. in blue colour accent



Technical data

Lying area	External dimension	Article no.
100 x 200 cm	113 x 206 cm	
90 x 200 cm	103 x 206 cm	
Doors		
Four-winged folding sliding door		•
Four-winged folding sliding door on both sides	99.750	+
Folding door in the 270° version	99.704	+
Folding door in the 270° version on both sides	99.704BEID	+
Locking mechanism		
Child-proof SAVI-lock I		•
Child-proof SAVI-lock I metal	40100003	+
SAVI-lock II	99.033	+
SAVI-lock III	99.034	+
SAVI-lock IV	99.034A	+
Lying height (top of slatted bed base)		
50 cm (without castors)		•
Barred side height	Overall height	
100 cm	150 cm	150.50.004
125 cm	175 cm	175.50.004
Special sizes on request		
Slatted bed base		
Manual adjustment	99.030	+
Electric adjustment (no height adjustment)	99.200	+
Running gear		
Four castor running gear with total locking mechanism (height: 17 cm)	99.887	o.r.
Designer wooden castors (height: 17 cm)	99.886	o.r.
Kind of wood		
Pinewood		n.a.c.
Beechwood „natural oiled“ (further colours see p. 79)		•
Mattresses		
Polyfoam mattress	99.031.4	•
Cold foam mattress	99.031.5	+
Reha-star mattress plus (up to stage 2)	99.031.3.PLUS	+
Reha-star mattress II (up to stage 4)	99.031.3.ZWEI	+
Incontinence cover	99.031.3ZA50	+

• = standard o.r. = on request + = accessories n.a.c. = no additional charge



Technical data

Coloured features		
Natural	90.100	n.a.c.
Yellow	90.128	n.a.c.
Orange	90.204	n.a.c.
Blue-purple	90.405	n.a.c.
Purple	90.406	n.a.c.
Blue	90.515	•
Green (for more colours see page 78)	90.618	n.a.c.
Equipment		
Children's name on side of bed	Kindername	n.a.c.
Coloured sticks to go to the coloured feature		n.a.c.
Perspex instead of sticks		o.r.
External lock on side of bed	99.706	+
Tube feed-through	99.840	o.r.
Raising aid	99.802	+
Adaption of the bed for sloping ceiling		o.r.
2 drawers	99.040	+
Mattress holder	99.891	+
Protection for the bed base in case of kicks	99.892	+
Wood care set	99.880	+
Padding		
Motifpadding MALU, 50 cm height	99.050MALU	+
loose Skai-padding, 50 cm height	99.051	+
loose Skai-padding, 100 cm height	99.051.100	+
Fixed Skai-padding	99.051.FEST	o.r.
Fixed Skai-padding with integrated vinyl windows	99.051.FEST	o.r.
Edge padding	99.053	+

• = standard o.r. = on request + = accessories n.a.c. = no additional charge

Our Skai-padding is in many colours available!

You can find a pre-selection on our website at:

www.savi.de/en/bed-padding/



Jonas

Key data of Jonas

- Barred side height 100 - 125 cm, or even higher (i.e. 220 cm) available
- Fixed lying height 50 cm (entrance height)
- Child-proof SAVI-lock
- Drawers (option)
- Perspex (option)



ID: 35578
270° doors, fixed padding, sticks, castors and Lexan



ID: 32416
Drawers, castors



ID: 32149
Wood colour "Walnut"



ID: 37134
Perspex

Examples



ID: 34012
Lexan equipment
(with air holes)
and net-roof



ID: 35831
Fixed Skai padding with
integrated vinyl windows and
child's name on the side of
the bed

"I don't put my head
in the sand -
I put it on a
comfortable pillow."



ID: 30590
Entry aid made from
imitation leather

Lola



Small heroes very big – Lola is the ideal bed for toddlers.

This bed is ideal for small children because it has a fixed, high basic lying height, making nursing more comfortable. It also relieves pressure on the back during care and ensures your child has a restful night's sleep.



EN 60601-2-52
DIN EN 50637

According to Medical Device Regulation
CE-Markering
Declaration of Conformity

Why a bed from SAVI?

- Great safety for your child
- Biologically neutral, pollutant-free (DIN EN 71-3)
- Stability and reliability
- Comfortable, back-friendly care height electric
- Many bed sizes
- Individual equipment options
- Optimal eye contact with your child
- Large, safe indoor area
- Colourful padding for maximum protection
- Short delivery times

Lola's individual strengths

- Good care height/slatted bed base 85 cm
- Drawer (option)



Choice of colours (see on page 78)

door open



Barred side height 65 cm
e.g. in green colour accent



Barred side height 65 cm and drawers
e.g. in green colour accent

Technical data

Lying area	External dimension	Article-no.
100 x 200 cm	113 x 206 cm	
90 x 200 cm	103 x 206 cm	
Doors		
Four-winged folding sliding door		•
Four-winged folding sliding door on both sides	99.750	+
Folding door in the 270° version	99.704	+
Folding door in the 270° version on both sides	99.704BEID	+
Locking mechanism		
Child-proof SAVI-lock I		•
Child-proof SAVI-lock I metal	40100003	+
SAVI-lock II	99.033	+
SAVI-lock III	99.034	+
SAVI-lock IV	99.034A	+
Lying height (top of slatted bed base)		
85 cm (without castors)		•
Barred side height	Overall height	
65 cm	150 cm	150.85.002 •
90 cm	175 cm	175.85.002 +
Special sizes on request		+
Slatted bed base		
Manual adjustment	99.030	+
Electric adjustment	99.200	+
Running gear		
Four castor running gear with total locking mechanism	99.887	o.r.
Designer wooden castors	99.886	o.r.
Kind of wood		
Pinewood		n.a.c.
Beechwood „natural oiled“ (further colours see p. 79)		•
Mattresses		
Polyfoam mattress	99.031.4	•
Cold foam mattress	99.031.5	+
Reha-Star Plus (Stadium 2)	99.031.3 PLUS	+
Reha-Star II (Stadium4)	99.031.3.ZWEI	+
Incontinence cover	99.031.3.ZA50	+

• = standard o.r. = on request + = accessories n.a.c. = no additional charge

Technical data

Coloured features		
Natural	90.100	n.a.c.
Yellow	90.128	•
Orange	90.204	n.a.c.
Blue-purple	90.405	n.a.c.
Purple	90.406	n.a.c.
Blue	90.515	n.a.c.
Green (for more colours see page 78)	90.618	n.a.c.
Equipment		
Children's name on side of bed	Kindername	n.a.c.
Coloured sticks to go to the coloured feature		n.a.c.
Perspex instead of sticks		o.r.
External lock on side of bed	99.706	+
Tube feed-through	99.840	o.r.
Raising aid	99.802	+
Sit up aid	99.820	+
Adaption of the bed for sloping ceiling		o.r.
Drawer (2 pieces)	99.041	+
Mattress holder	99.891	+
Protection for the bed base in case of kicks	99.892	+
Wood care set	99.880	+
Padding		
Motifpadding MALU, 50 cm height	99.050MALU	+
losse Skai-padding, 50 cm height	99.051	+
Fixed Skai-padding	99.051.FEST	o.r.
Fixed Skai-padding with integrated vinyl windows	99.051.FEST	o.r.
Edge padding	99.053	+

• = standard o.r. = on request + = accessories n.a.c. = no additional charge



Lola

Key data of Lola

- Barred side height of 65 - 90 cm, other heights on request
- Fixed lying height 85 cm
- Child-proof SAVI-lock
- Drawer (option)
- Perspex (option)



ID: 17042
Fixed Skai-padding in white



ID: 33029
270° door with Lexan, the rest closed with wood instead of sticks



ID: 28513
Lying area 130 x 160 cm, barred side height 45 cm



ID: 26380
Four lowerable side rails



ID: 31388
Wood colour 'Wenge',
bed gallow

"I like to dream
about my friends
and the beach."



ID: 19540
Supply opening (hole)
with closing mechanism



ID: 36779
Drawer, stained white



ID: 31727
Perspex allover

Felix



As flexible as Felix – the therapeutic couch without limits

This therapeutic couch offers your child a large therapeutic area and a low entry height. This makes the therapy particularly pleasant for parents, carers and children. It also conceals sufficient storage space for therapy needs and much more.

Its homely design and disinfectability makes Felix thoroughly suitable for everyday use.



According to Medical Device Regulation
CE-Markering
Declaration of Conformity

Felix (a)

Felix' individual strengths

It is often the small practical aids that decide whether something is good or bad in everyday use. As manufacturers of furniture for rehabilitation purposes, we have incorporated this valuable experience in the design of our new therapeutic bed. The result is a multifunctional couch in a design that appeals to children.

Handy: storage box for utensils like, for example, blankets and preparations

Materials: Powder-coated tubular steel frame, Skai-padded lying surface



height adjustment
68 - 103 cm



Many wood colours possible (see p. 79)

Technical data – Felix (a)

Therapeutic couch | (max. load 140 kg)

Lying area (min. 130 x 100 cm, max. 218 x 100 cm)

Without castors, height adjustment 68 - 103 cm

Castors, height adjustment 75 - 110 cm

Article-no.

9910.68103

9910.75110



Felix (b)

Technical data – Felix (b)

Therapeutic couch (max. load 150 kg)	
Lying area (min. 172,5 x 100 cm, max. 261 x 100 cm)	Article-no.
Without castors, height adjustment 45 - 86 cm	9911.4586
Castors, height adjustment 52 - 93 cm	9911.5293
Therapeutic couch no folding sides (only fixed lying area)	
Lying area	Article-no.
70 x 140 cm	9911.529370140
90 x 170 cm	9911.529390170
90 x 200 cm	9911.529390200
100 x 200 cm	9911.5293100200
Without castors, height adjustment of 45 - 86 cm	n.a.c.
Castors, height adjustment of 57 - 93,5 cm	•

• = standard n.a.c. = no additional charge



Travel bed

The travel bed for children from SAVI: A home away from home

The travel bed consists of:

- 1 beechwood frame
- 1 net element, very tear-resistant
- integrated climbing protection
- 1 bag

practically packed
in a bag



3-part mattress
(option)



The travel bed consists of:

- 1 doorelement with lock
- 5 elements to plug together
- transport trolley with castors and cover

practically packed



Technical data

Lying area	Barred side height	Article-no.
SAVI-travel bed 70 x 190 cm	120 cm	120.070.01.05
Mattress 70 x 190 cm, 3-fold		+
Net in black		
Net in blue		
Net in pink		
• = standard += accessories		

Technical data

Lying area	Barred side height	Article-no.
SAVI-travel bed 90 x 200 cm	125 cm	120.090.01.05
Other size on request		
Net roof		+
SAVI-lock II		•
Transport trolley with castors and cover		•
• = standard += accessories		



Step on the gas and take off – The racing car among Babywalkers

Great for learning to walk! Load, unload, transport! Later, the children can drive each other around in it!

With the Babywalker, your child is always in the lead. The Babywalker helps children discover their world and gives them confidence as they take their first steps. The first steps are an important milestone!

The high-quality Babywalker ensures that your little one takes them safely and without accidents. It accompanies your child every step of the way - both at home and outside.



Remarkable features of our Babywalker



Height adjustable
hand grip



Smooth-running
castors



Sharpening brake

Technical data

Height	Width	Length	Article-no.
84 cm	54 cm	70 cm	•
Running gear			
4 smooth-running castors with sharpening brake			
Storage box			
Large loading area			
Hand grip			
Height adjustment, so that the walker "grows"			
No height adjustment			
Load			
Up to 30 kg			
Surface			
According to DIN 71-3 (security for toys)			
• = standard + = accessories			

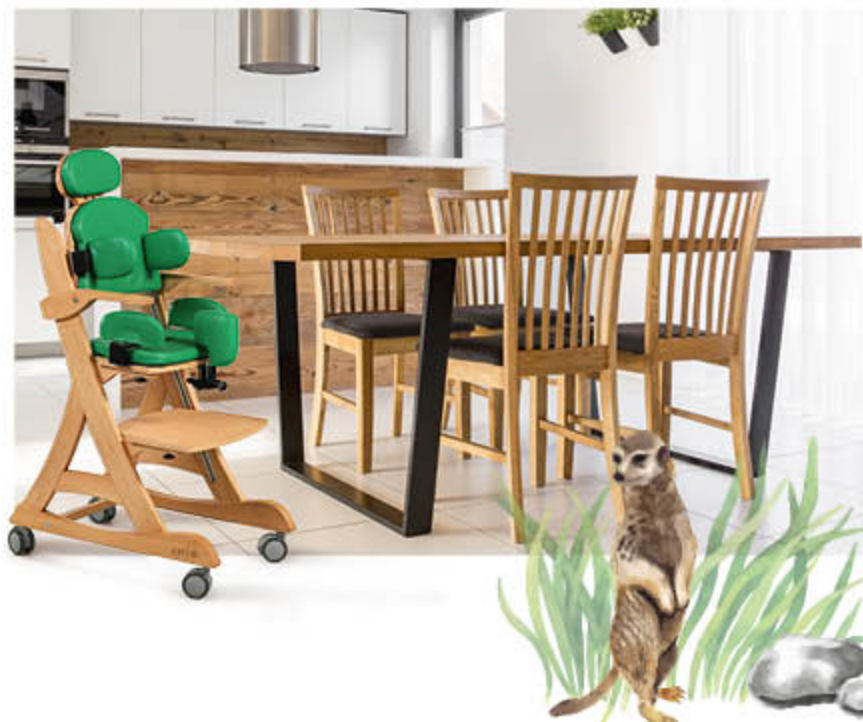


Therapy chair

The practical "Wellenreiter" therapy chair that grows with you!

„Wellenreiter“ consists of a sturdy frame made of lacquered beech wood with integrated aluminium profiles:

- Height and angle of inclination of the backrest are adjustable
- Height-adjustable armrests
- Multi-adjustable seat and foot plate (height, inclination, depth)
- Seat and backrest padding and transport castors included
- Blends harmoniously into the living environment and is an ideal support for active sitting, not just at the kitchen table
- Washable seat pads are available in several attractive colours
- Practical adjustment options offer quick and easy height adjustment
- Attachable therapy table in two sizes, either with or without edge



thoracic supports, pelvic supports, abduction wedge



seat and foot plate angle adjustment



attachable therapy table

Technical data

	size S KIGa	size S	size L KIGa	size L	size XL
Seat width	17-28 cm	17-28 cm	24-34 cm	24-34 cm	30-40 cm
Seat depth	20-27 cm	20-27 cm	27-33 cm	27-33 cm	29-35 cm
Seat height max.	47 cm	57 cm	49 cm	55 cm	64 cm
Backrest height	23 cm	23 cm	26 cm	26 cm	31 cm
Backrest angle	0° - 17,5°	0° - 17,5°	0° - 17,5°	0° - 17,5°	0° - 17,5°
Seat angle	(-)5° - 12°	(-)5° - 12°	(-)5° - 12°	(-)5° - 12°	(-)5° - 12°
Foot angle	(-)5° - 12°	(-)5° - 12°	(-)5° - 12°	(-)5° - 12°	(-)5° - 12°
max. load	30 kg	30 kg	45 kg	45 kg	60 kg

Flexible use - Babybox/Therapy box

Our therapy box offers parents of children with disabilities a safe and flexible solution for creating a protected environment.

It can be individually adapted to the needs of your child and therefore offers optimum support in everyday care.

The Therapy box consists of:

- A door element with lock
- Seven elements to assemble
- Eight feet to assemble



Technical data

Height of the elements	Width of the elements	Article no.
100 cm	90 cm	100.090.01.07
Type of wood		
Beech wood, pine wood		
Bar spacing		
6 cm		

Adaptable to your home

The size of the Babybox can be easily adapted by adding or removing individual elements. This means you can always create the right space for your child - whether for therapy or for a safe stay in everyday life.



Custom Seating

From the seat mould to the milling block

The simplest method is to scan the seat mould yourself using a 3D scanner app. However, if no 3D scanner app is available, the mould can also be foamed.

The customer's foamed mould (e.g. vacuum impression) can be scanned into our system. The scan file is then used to mill a foam block with millimetre precision.



Advantage of the 3D scanning method:

- Easy handling (dispatch by e-mail)
- No storage costs for models
- Environmentally friendly, as no material waste

Examples:

Full-body reclining shell milled after a 3D scan

The finished mould for the reclining shell



2-piece seat shell milled from a 3D scan

Back and seat element of a 2-part seat shell (finish)



Example of a finished 2-part milling block:


The complete two-part milling block, ready for further processing such as coating, production of the cover or the receiving mould.





Body for an armchair with integrated seat shell

The finished armchair mould with integrated seat shell. The armchair body was assembled from several foam blocks.



Three simple steps to your customised seat shell:



SELF
position



simply
scan it
YOURSELF



WE
mill



Various foam qualities possible:

- pink 4606
- grey 6511
- Frame Foam Ersatz HD anthracite

We will also be happy to send you sample foam blocks free of charge!
Simply send us an e-mail to: info@savi.de

Accessories

Equipment, which makes nursing easier



Wood care set



SAVI-lock I



Lockable Handset box



"easy-close"-mechanism



SAVI-lock II



270° door



Touch protection



SAVI-lock III



Removable corner posts



Foot cut out



SAVI-lock IV



Protection for the bed base



Children's name



Coloured sticks



Central locking device



Drawers



External lock on side of bed



Net-roof



Supply opening with closing mechanism



Tube feed-through (gap version)



Entrance aid



Raising aid



Play trainer wood



Play trainer metal



Slatted bed base

Slatted bed base no adjustment (fixed):

Slats frame with individual central zone reinforcement.



Electric slatted bed base (no height adjustment):

Continuously variable hardness regulation with electric adjustment of the head, torso, pelvic, knee and foot



Fixed bed base

Base plate made of plywood (no slatted frame).



Step protection wood

Mounted above the slatted frame on the slats.



Step protection metal

Mounted below the slatted frame. Spring action and reclining comfort are maintained.



Very simple
and clear



1 Polyfoam mattress

Material: Pu foam
 Strength: Density (35 kg/m³)
 Reference substance: Blue elastic cover in cotton fabric (at 60 °C washable), optionally also in difficult flammable execution.

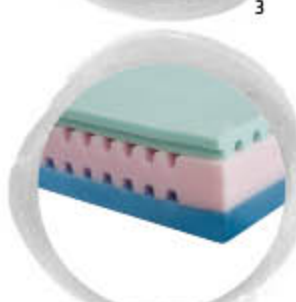
Overall height
 of the mattress: ca. 12 cm

2 Cold foam mattress

Height: Approx. 14 cm
 Coating: Double jersey (65% polyester, 35% viscose)
 Padding: On both sides ca. 350 g/m² climate fiber (100% polyester), fleece
 Care: Cover removable by 4-sided zipper. Halves divisible and individually washable up to 60°C in gentle cycle with mild detergent, suitable for tumble dryers.
 Core: 7-zones-Ortho-cel®-cold-foam-core (height of core approx. 12 cm)

Incontinence cover

Fabric: 100% polyester
 Coating: 100% polyurethan
 Supple, skin-friendly, anti-allergic, bacteria-proof, resistant to blood, urine, oil, grease, disinfectants
 Care: Machine wash 95 °C suitable



3 Reha-Star mattress plus up to stage 2 (according to Prof. Seiler)

- Anti-decubitus therapy systems
 Thermally reprocessed by RKI guidelines
- Hyper Elastic foam core with transverse and longitudinal sections
 - 2-ply
 - Ventilation channels for an optimum microclimate
 - Optimal pressure relief and reduction of shear forces (under 18 mm/Hg print run)
 - PU-Tex cover removable and washable up to 95 °C + wipe disinfection
 - Mattress can be autoclaved
 - Water vapour permeable
 - Flame-retardant according to DIN EN 597 (part 1 + 2) agreed
 - 0 to 140 kg of patient weight
 - Suitable for pain therapy

4 Reha-Star mattress II up to stage 4 (according to Prof. Seiler)

- Thermally reprocessed by RKI guidelines
- Hyper Elastic foam core with transverse and longitudinal sections
 - 3-ply
 - Ventilation channels for an optimum microclimate
 - Optimal pressure relief and reduction of shear forces (under 18 mm/Hg print run)
 - PU-Tex cover removable and washable up to 95 °C + wipe disinfection
 - Mattress can be autoclaved
 - Water vapour permeable
 - Flame-retardant according to DIN EN 597 (part 1 + 2) agreed
 - 0 to 150 kg of patient weight
 - Suitable for pain therapy

Range of colour

Get to know our range of colour accents:



Grey
(Article-no. 90.738)



Blue
(Article-no. 90.515)



Blue-purple
(Article-no. 90.405)



Purple
(Article-no. 90.406)



Orange
(Article-no. 90.204)



Red
(Article-no. 90.302)



Yellow
(Article-no. 90.128)



Natural
(Article-no. 90.100)



Green
(Article-no. 90.618)



Pink
(Article-no. 90.410)



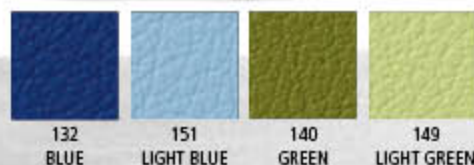
White
(Article-no. 90.101)

Thanks to individual production, we can offer you the right padding for each specific need.

Our Skai-padding is in many colours available!

You can find a preselection on our website at: www.savi.de/en/bed-padding/

We will gladly send you the current colour selection.



Technical data

Padding | thickness Skai-padding 3 mm

Skai-padding 50 cm	99.051
Skai-padding 100 cm	99.051.100
Skai-padding with integrated vinyl windows	
Motifpadding MALU, 50 cm	99.050MALU
Fixed Skai-padding 50 cm	99.051.FEST
Fixed Skai-padding with integrated vinyl windows	99.051.FEST
Edge padding	99.053

Motifpadding

The motifpadding is simply attached to the sticks of the bed with cords.



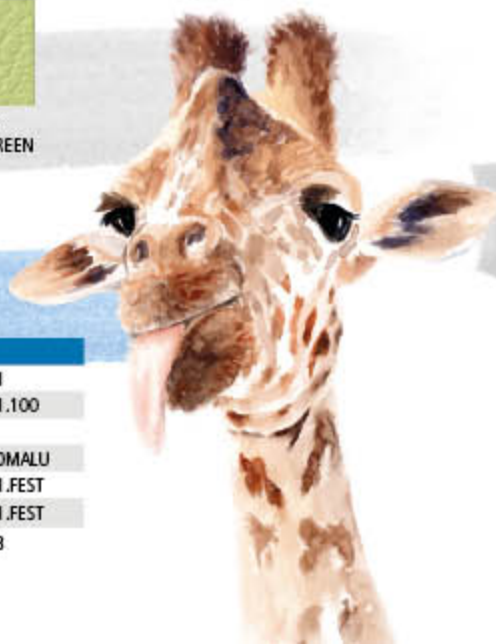
MALU

Great paddings that fit really well

Wood colours

Our beds are available in many wood colours. As an alternative to „natural oiled“, the beech wood is treated with the desired colour glaze – all possibilities are biologically neutral and free of harmful substances according to DIN EN 71-3 (safety of toys)!

As wood is a natural raw material, every bed looks different. Your bed will be one of a kind!



Padding

Loose Skai-padding

Our loose Skai-padding includes all variants listed below!

Skai-padding with ...

... cords on the sticks.
The flexible positioning of the cords ensures optimum fastening at all times.



... Velcro-fixing, height adjustment possible!
The Velcro webs are attached to the sticks.



... adhesive fleece on the side rails for fixing.



Fixed Skai-padding

The bed dimensions are adjusted so that the electric height adjustment remains freely accessible (can ONLY be retrofitted to Little Mila).



Fixed Skai-padding with integrated vinyl windows

The Skai-padding is framing a vinyl window. You and your child have a perfect view (see page 26)!



Edge padding

The padding on the edges protects against injuries. Only possible in combination with the fixed Skai-padding.



Create your own



Create your children's bed for rehabilitation!

This is a list which you can use to create your children's bed for rehabilitations. We will take your wishes into consideration and make an offer about one of our bed's.

Just make a cross and decide how your bed should look like:

1. Lying area of the bed?

- ☐ 65 x 155 cm ☐ 70 x 140 cm ☐ 90 x 170 cm
☐ 90 x 200 cm ☐ 100 x 200 cm other size: _____

2. Which barred side do you need? Height (cm): _____

3. Do you use a patient-lifter? ☐ Yes ☐ No

4. Which lying height (top of slatted base) do you need?

- ☐ 40 cm ☐ 50 cm ☐ 60 cm ☐ 70 cm other height: _____

5. Do you need an electric height adjustment? ☐ Yes ☐ No

6. Which slatted bed base do you need?

- ☐ no adjustment ☐ manual adjustment ☐ step-protection for the bed base
☐ electric adjustment ☐ Trendelenburg-function

7. What kind of doors do you want?

- ☐ 4-winged folding sliding door ☐ 270° door ☐ side rail "hide away" ☐ folding door
☐ lowerable side rail ☐ electric lowerable side rail

8. How many doors do you need?

- ☐ front side ☐ front and back sides ☐ head and footelement

9. Locking mechanism?

- ☐ SAVI-lock I ☐ SAVI-lock II ☐ SAVI-lock III ☐ SAVI-lock IV

10. Do you need perspex?

- ☐ Yes. Where?: _____ ☐ No

11. Kind of wood / wood-colour? Wood:

- Wood-colour: ☐ natural ☐ basalt ☐ wenge ☐ barrique ☐ teak ☐ walnut
☐ white stained ☐ white lacquered

12. Colour feature?

- ☐ natural ☐ yellow ☐ orange ☐ red ☐ grey ☐ blue-purple ☐ purple
☐ blue ☐ green ☐ white ☐ pink ☐ other colour: _____
☐ coloured sticks ☐ children's name: _____

13. Running gear? ☐ castors ☐ without castors

14. Do you want drawer? ☐ Yes ☐ No

15. Do you want a mattress? ☐ Yes ☐ No

If yes, which one?

- ☐ polyfoam mattress ☐ interior spring mattress ☐ cold foam mattress
☐ Reha-Star II ☐ Reha-Star Plus ☐ incontinence cover

16. Do you need a padding? ☐ Yes ☐ No

If yes, which one?

- ☐ loose Skai-padding ☐ fixed Skai-padding ☐ edge-padding ☐ motifpadding MALU
height of the padding: _____ colour of the padding: _____

17. Do you need vinyl windows?

- ☐ Yes. Where? _____ ☐ No

18. Equipment?

- ☐ removable posts (Niklas) ☐ net-roof ☐ raising aid ☐ lockable handset box
☐ tube feed-through (gap) ☐ infusion holder ☐ drawers ☐ mattress holder
☐ touch-protection for height adjustment ☐ foot cut-out (e.g. for patient lift)
☐ central locking device for 4-roller chassis (Knut a+b only) ☐ access aid made of artificial leather
☐ supply opening (hole) with closing mechanism

☐ Please use this statements to create an offer, where you choose a model, which fulfils the handicaps to the greatest possible extent.

☐ Please use this statements to create an offer about a special model to fulfil the handicaps exactly.

place, date

stamp, sign

Very easy:

Just send us your order via email

or use our online-form at: www.savi.de/en/home/

SAVI GmbH Reha Solutions

Lise-Meitner-Str. 10 Fon: +49 (0) 25 64 - 93 09-70

D-48691 Vreden Fax: +49 (0) 25 64 - 93 09-60



Note



Your dealer:

SAVI GmbH Reha Solutions
Lise-Meltner-Straße 10
48691 Vreden
Germany

Tel: +49 (0) 25 64 - 93 09 - 70

Fax: +49 (0) 25 64 - 93 09 - 60

www.savi.de/en/home/

Info@savi.de

